

erinha

European Research Infrastructure
on Highly Pathogenic Agents

Research Infrastructures' contribution to UN SDGs: Enabling excellent science in service of society

Diana STEPANYAN, ERINHA (H&F RIs)

Wednesday, 19 October 2022
ICRI 2022, Brno

ERINHA.EU



► Make Science Happen

European Research Infrastructures have transformed the way science is done

They make high-quality facilities, resources and services available to everyone to perform excellent and ground-breaking research.

European RIs in Health & Food domain: key pillar of Europe's contribution to a healthy planet





EMBRC
EUROPEAN
MARINE
BIOLOGICAL
RESOURCE
CENTRE



How the Health and Food Research Infrastructures contribute to UN SDGs ?

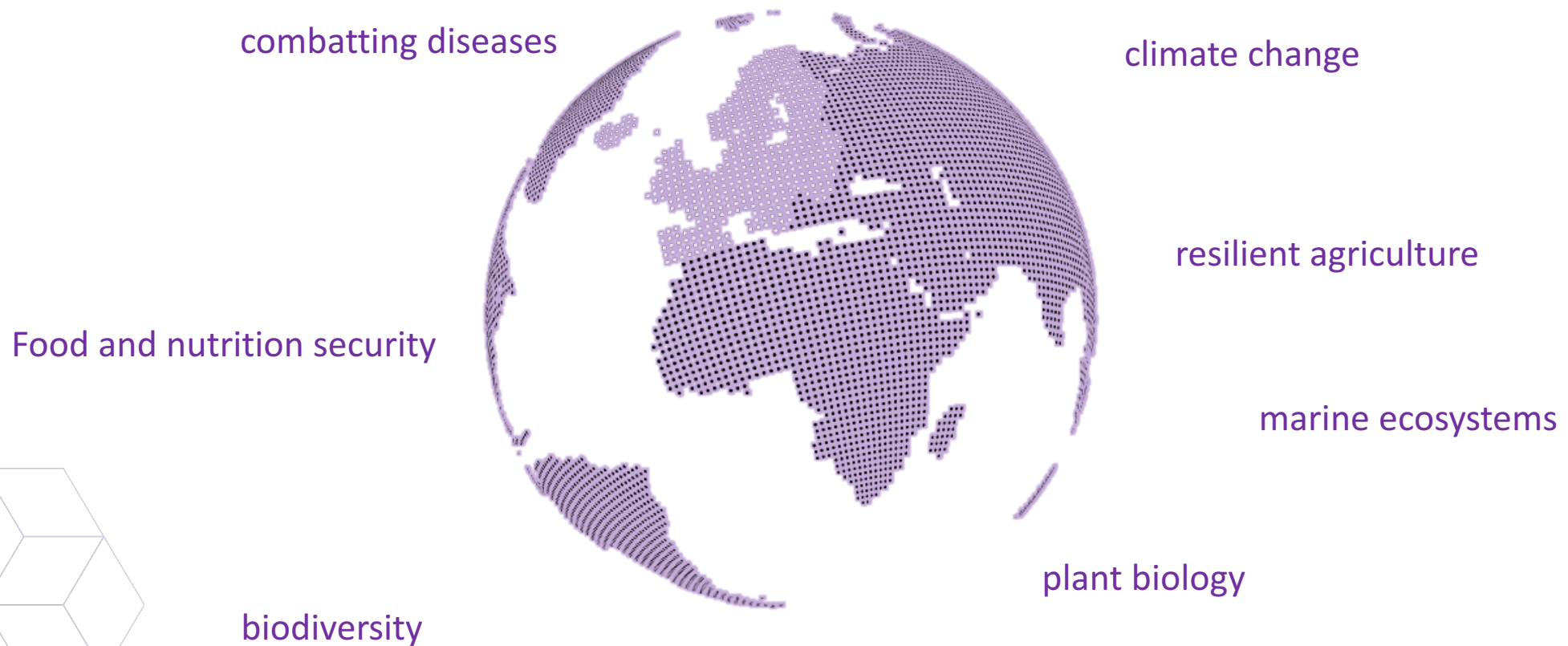


How the Health and Food Research Infrastructures contribute to UN SDGs ?

Here, environment meets health with all its major challenges



How the H&F RIs contribute to UN SDGs ?



How the H&F RIs contribute to UN SDGs ?

One Health Approach

Environmental health, animal health & human health

=>

biodiversity,

climate change,

zoonotic diseases,

reducing the effects of hazardous
environmental agents on health



One Health; One world (Source: <http://sds.uanl.mx/una-salud-una-medicina-en-un-mundo-globalizado/mundo-y-biodiversidad/>)

SUSTAINABLE DEVELOPMENT GOALS



Health & Food RI contribution to



Break-through discoveries in health with impact on the society and economy

- Fighting infectious diseases, cancer, civilization disorders, rare and chronic diseases, ...
 - From understanding of diseases...
 - ... to medical countermeasures development and translation to the market



COVID-19 pandemic

ELIXIR

- COVID-19 Data Portal – free access to viral sequence & other relevant data (e.g. imaging, proteins...)

EU-OPENSOURCE

- Drug repurposing/candidate molecule testing

ERINHA

- High-containment in-vitro & in-vivo pre-clinical testing (drugs, vaccines, diagnostic tools)

Infrafrontier

- Anti-COVID-19 compounds testing on mice models

INSTRUCT ERIC

- Structural biology technologies for protein characterization for COVID-19 drug discovery

And much more with **Euro-Bioimaging, ECRIN, EATRIS, BBMRI**





ACTION:

Support excellent research on epidemic- and pandemic-prone pathogens

Provide free of charge access to Research Infrastructures' services, resources, technologies and expertise

OBJECTIVE:

Increase pandemic preparedness and responsiveness



INTEGRATED SERVICES FOR INFECTIOUS DISEASE OUTBREAK RESEARCH

- Do you need specific research services, tools or resources to advance your research in infectious diseases?

ISIDORE provides an integrated portfolio of cutting-edge research services and resources to study epidemic-prone pathogens including SARS-CoV-2





3 GOOD HEALTH
AND WELL-BEING



ISIDORE

erinha
European Research Infrastructure
on Highly Pathogenic Agents



eatris

ecrin



eu:openscreen

EURO BIOIMAGING

EVAg
European Virus Archive Global



instruct
ERIC



sonar
global

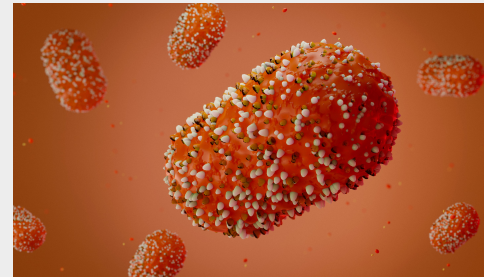




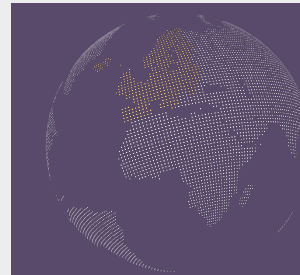
SERVICES	300+
PARTNERS	154 (under 17 RIs umbrella)
COUNTRIES	32
Project Requests submitted	110+

<https://isidore-project.eu>

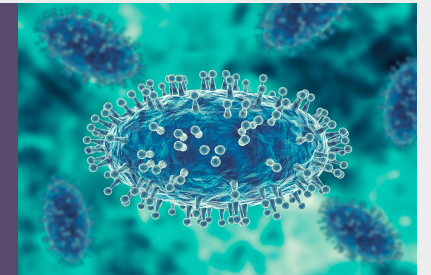
RESPONSE



Monkeypox Virus



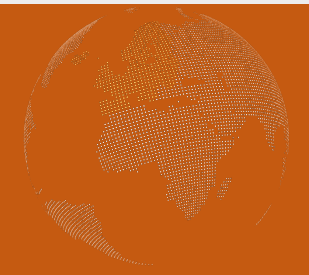
COVID-19/ SARS-CoV-2



PREPAREDNESS

Coming soon

Preparedness Calls (RG4, Vector-borne Pathogens, Non-SARS-CoV-2 Respiratory viruses, Disease X)





110+
REQUESTS

ANALYTICAL
SERVICES



CELL
MODELS



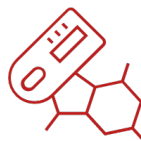
IN VIVO
MODELS



IMMUNO-MONITORING
& PROFILING



SUPPORT FOR DIAGNOSTIC
& THERAPEUTIC
DEVELOPMENT



SUPPORT FOR
VACCINE
DEVELOPMENT



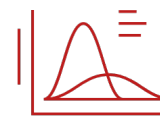
CLINICAL
SAMPLES



REGULATORY ADVICE, TRIAL
PREPARATION & ACCESS TO
CLINICAL TRIALS



SOCIAL SCIENCES &
EPIDEMIOLOGY





Impact on

Global Health

Scientific Excellence

Preparedness to threats





European Research Infrastructure
on Highly Pathogenic Agents

THANK YOU

LEARN MORE: erinha.eu

CONTACT US: contact@erinha.eu



Follow us on: [@erinha_RI](https://twitter.com/erinha_RI)